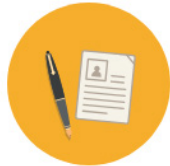
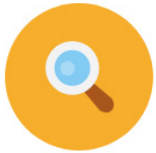


SEMESTER ONE 2019 EXCHANGE

ANU Global Programs



2 Semesters Before

2 Semesters Before

1 Semester Before

1 Semester Before

Exchange Semester

Mar 2018

1

Jun 2018

2

Jul 2018

3

Dec 2018

4

Jan 2019

5

Jul 2019

1. RESEARCH

- Attend an Exchange Info Session. 📢 **Mar/April**
- Check our website and program search.
- Research list of partners and course offerings.
- Check eligibility (units, year level, GPA, language requirements).
- Find 5 universities and complete a "College Endorsement Form" (CEF) and obtain approval from your academic college.
- Get Language Approval Form (LAF) completed (if relevant)

2. APPLICATION

- Register with the online Global Programs system at <http://anu-au-sa.terradotta.com>.
- Start your application and upload your CEF.
- Complete and submit 5 university applications before the deadline. 📢 **May 31**
- Continue to study well and get a great GPA!

3. NOMINATION

- Await exchange partner allocation results. 📢 **mid-Aug**
- Successful applications will have a nomination for one exchange partner.
- Log in to Global Programs System to accept (or decline) the nomination.
- Attend a Nomination Briefing. 📢 **Aug**
- Look at 'Learning Content' instructions to apply to the nominated host university with supporting documentation.
- Organise course approvals with your ANU academic colleges.
- Wait for offer from the host university.

4. PRE-DEPARTURE

- Apply for accommodation, health insurance, visas etc.
- Apply for OS-Help (if eligible).
- Attend a Pre- 📢 **Oct** Departure Session.
- Complete an "Enrolment Change Form".
- Obtain final course approval from your academic college.
- Finalise all arrangements like flights, immunisations, currency etc.
- Register with Smartraveller

5. ON-EXCHANGE

- Go on exchange!
- Keep in touch and continue to check your ANU email.
- Check ISIS to make sure that your exchange enrolment is correct.
- Share your exchange experiences on social media (Facebook, Instagram) and tag **#anuglobalprograms**
- Don't forget to order a transcript before you come back home (if applicable for your partner).

 follow us on Facebook:
<https://www.facebook.com/anuglobalprograms/>

for more information: <http://bit.ly/exchangeanu>