

Student Exchange Information Session

Exchange in Semester 2, 2018

Presented by: ANU Global Programs

Why go on exchange?

- Learn about another culture
- Become more independent and confident
- Opportunity to travel
- Meet new people
- Gain international experience
- Career development



Where can I go?

There are 170+ partners in 37 countries!



Austria | Brazil | Brunei | Canada | Chile | China |
Colombia | Czech Republic | Denmark | Finland |
France | French Polynesia | Germany | Hong
Kong | Hungary | Indonesia | Ireland | Italy | Japan
| Mexico | Myanmar | Netherlands | New
Caledonia | New Zealand | Norway | Peru |
Portugal | Singapore | South Korea | Spain |
Sweden | Switzerland | Taiwan | Thailand | Turkey
| United Kingdom | United States

Exchange grants and scholarships \$\$\$

New Colombo Plan Grants

(only Australian citizens are eligible):

- **Korea:** Sungkyunkwan University – 2 grants of **\$7,000 each** (run by Global Programs any discipline).
- **China:** ANU Global Leaders Program: Semester Exchange and Internships in China – 10 grants and 10 internships, total of **\$8,000 each**, run by CBE.
- **Hong Kong:** Hong Kong Semester Exchange and Internship - 4 grants and 4 internships, total of **\$8,000 each**, run by CBE.
- **Singapore:** Singapore Semester Exchange and Internship - 6 grants and 6 internships, total of **\$8,000 each**, run by CBE.

Endeavour Grants

(Australian citizens and permanent residents are eligible):

- **Myanmar / Singapore:** 3 grants of **\$5,000 each** (run by Global Programs any discipline).
- **Korea:** 2 grants of **\$5,000** (run by Global Programs any discipline).

Westpac Asian Exchange Scholarships

(Australian citizens and permanent residents are eligible):

There are 5 scholarships valued at **\$12,000** per student.

- **Beijing:** Tsinghua University, Peking University, Beijing Institute of Technology.
- **Shanghai:** Fudan University and Shanghai Jiaotong University.
- **Hong Kong:** University of Hong Kong, Chinese University of Hong Kong, City University of Hong Kong.
- **Singapore:** National University of Singapore, Nanyang Technological University, Singapore Management University.

Exchange partners funding provided \$\$\$



South Korea:

- EWha Womans University
- Korea University
- Seoul National University
- Sogang University
- Sungkyunkwan University
- Yonsei University



China:

- Tsinghua University
- Peking University
- Beijing Institute of Technology
- Fudan University
- Shanghai Jiaotong University



Singapore:

- National University of Singapore
- Nanyang Technological University
- Singapore Management University
- Yale-NUS College

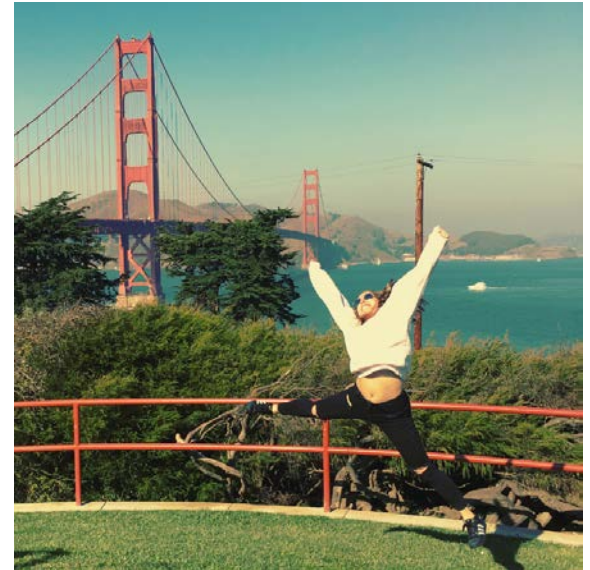


Hong Kong:

- University of Hong Kong
- Chinese University of Hong Kong
- City University of Hong Kong
- Hong Kong University of Science and Technology

How does exchange work?

- Exchange is for one semester
- Remain enrolled at ANU
- Continue to accumulate your normal tuition fees at ANU
- Your degree(s) has room for exchange studies
- Must maintain a full-time study load (equivalent to 24 units)
- Courses studied overseas must be credit-bearing (your academic college has to approved it to count towards your ANU degree)



Am I Eligible?

Requirements at the time of going on exchange:

- Completed 48 units (1 year of full-time study) before exchange starts.
- Minimum GPA of 4 on a 7 scale* (pass average) – includes all courses taken in your undergraduate degree.
- Law students doing law subjects for exchange - Minimum GPA of 5 in all law courses.
- Obtain approval from academic college(s) with signed College Endorsement Form for your exchange semester.

* This can vary from partner to partner. For restricted partners (ie. partners that are very popular with students), at the time of application and going on exchange, applicant needs a minimum GPA of 6 to apply.

Requirements for Law students

- GPA of 5 and above in all your Law courses
- Law students need to have completed at least 6 Law courses (36 units) at the time of application
- All law student must consult the College of Law on eligibility as there are implications to the research component to your law degree

You can go on exchange anytime starting in your second year onwards!



Please note: Some partners only offer courses to exchange students that are taught at a later year (ie. 2nd year 2nd semester or 3rd year restrictions). Please note the year-level restrictions for students in specific ANU programs or partners' programs may be applicable.

Requirements for exchange

- 'Restricted' partners: GPA of 6 (distinction average) and above and a 'statement of purpose'
- Students must meet any additional requirements of their Academic College(s).
- Exchange is competitive. Students with a high GPA are more likely to receive one of their top preferences.
- For some countries, international students are not accepted for exchange by partners located in their home country eg. Korea, China. Please refer to partners' websites.

List of restricted partners – GPA 6

- ETH Zürich, Switzerland
- King's College London, United Kingdom
- Lund University, Sweden
- McGill University, Canada
- National University of Singapore, Singapore
- National University of Singapore – Business School, Singapore
- Peking University, China
- Sciences Po, France
- The University of Tokyo, Japan
- Trinity College Dublin, Ireland
- University of British Columbia, Canada
- University of Copenhagen, Denmark
- University of Hong Kong, Hong Kong
- University of Nottingham, United Kingdom
- University of Toronto, Canada
- US Partners in general (except School of Art specific US partners)

Partners only offer a fixed number of exchange spots each semester. Restricted partners are partners in high demand. So students listing very popular partners (ie. from restricted list) should note they need a higher GPA to be considered for one of the available spots. All applicants are GPA ranked.

General suitability

Considerations

- Would you like to live in a big city or a small town?
- Do you need to be in an English-speaking country?
- What is the cost of living? Does it fit your budget?
- What is the weather and climate like?
- What are some of the cultural values of the country?
- What experience do you want from exchange?
- Does the university offer courses you would find interesting?
- What activities and sports are popular?
- Is it important to be closer to Australia?

Partner Selections

List up to five (5) partner universities

Look at:

- Information on their page in the ANU Global Programs system
- Partner's own university websites
- Specific college websites

What are we looking for?

A good candidate will demonstrate:

- Independence
- Flexibility
- Adaptability
- Good organisational skills
- Ability to follow application instructions
- Emotional resilience
- Determination
- Commitment
- A sense of “community spirit”
- Eligible GPAs

Academic considerations

Elective courses

Utilise elective courses because this allows for more flexibility!

You may run into the following problems:

- Restricted courses
- Cancellation of courses
- Timetable conflicts
- Course content

If you are doing electives and an unforeseen problem arises it will be easier to manage.

If you do not have enough electives remaining in your degree structure or are not absolutely certain that courses completed overseas will count towards your major(s), you are advised not to go on exchange – seek advice from your College/s

What courses should I take?

- Investigate courses at partner universities that will complement your course of study
- You **MUST** see your College/s academic advisor to discuss what courses you should take
- ANU Global Programs cannot provide guidance or approval on what you study
- Only academic colleges can provide approval for you to apply for exchange and what you can study

Studying in a foreign language

- Minimum language requirements
- Get a Language Approval Form and have it approved through the ANU School of Literature, Languages and Linguistics.

Please see the following language convenors for approval:

- French: Leslie Barnes <Leslie.Barnes@anu.edu.au>
- German: Gabriele Schmidt <Gabriele.Schmidt@anu.edu.au>
- Italian: Daniel Martin <Daniel.Martin@anu.edu.au>
- Portuguese: Elizabeth Mayer <Elisabeth.Mayer@anu.edu.au>
- Spanish: Manuel Delicado <Manuel.Delicado@anu.edu.au>

Academic transcript

- Your grades from exchange will not appear on your ANU academic transcript
- ‘Exchange Program’ appears on your ANU academic transcript with ‘EE’ (enrolled elsewhere) with the unit value (ie. 24 units)
- You can request a copy of your academic transcript from your host university for your own purposes

Funding

- OS-HELP Loans
- Vice-Chancellor's Coursework Travel Grants
- Centrelink Youth Allowance

OS-HELP

- Please note that this is the indicative OS-HELP amount is \$6,567 or \$7,880 for students studying in Asia in 2017.
- The 2018 OS-HELP amounts have not been released yet.
- Submit your full OS-HELP application to the Grant Officer at Global Programs
- Only available to Australian Citizens, Permanent Humanitarian Visa holders or New Zealand Special Category Visa holders
- Commonwealth supported place in a degree program
- 48 units passed (approx. 8 courses)
- 6 units left at ANU to complete

<http://www.anu.edu.au/students/scholarships/os-help>

Vice-Chancellor's Coursework Travel Grants

Access and Equity (up to AUD \$10,000)

- You must be an Australian domestic student and are financially disadvantaged
- This may include students that also meet one or more of the following criteria:
 - Identify as Aboriginal or Torres Strait Islander
 - Have a long-term medical condition or disability
 - A holder of refugee status/Australian humanitarian visa
 - From a regional and remote background
- Applications for the Access and Equity grant open in March and close at the end of May.
- For any application questions, please refer to <http://www.anu.edu.au/students/contacts/access-inclusion>

Australian Government grants

- New Colombo Plan Scholarships and Mobility Program
- Endeavour Mobility Program
- Westpac Asian Exchange Scholarship

<http://www.anu.edu.au/students/scholarships/westpac-asian-exchange-scholarship>

Please refer to the slide earlier showing exchange partners with funding (they are partners in South Korea, China, Hong Kong and Singapore).

You can also visit the ANU Global Programs system and Government sites for information on grants and other funding. Your academic college(s) may also have college specific grants and other funding.

Application process

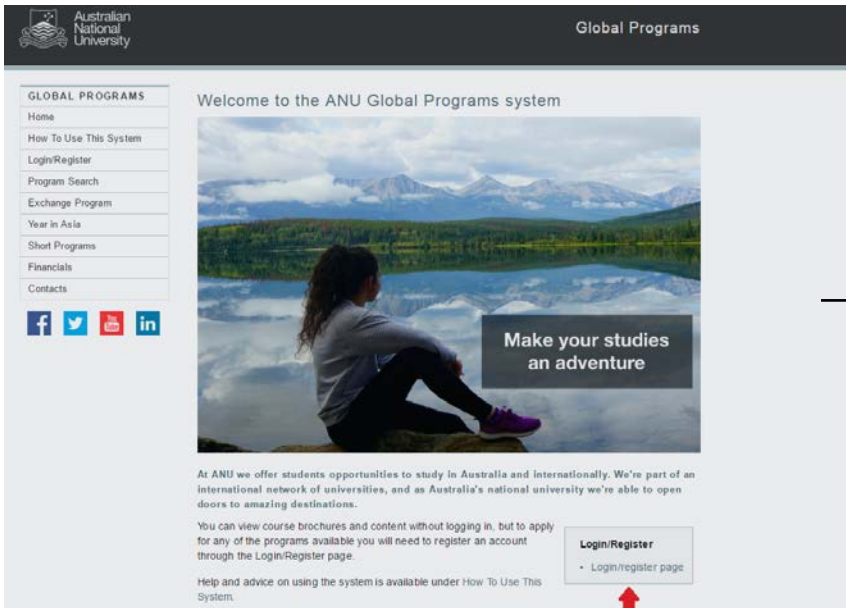
Apply via Global Programs System

- Check your eligibility (GPA) and investigate partner universities
- Get academic college approval – students must complete **College Endorsement Form**, and obtain GPA and signature from Academic College(s)
 - Flexible Double Degree students should get both College signatures if they intend to study courses to count towards both degrees on exchange
- If applicable, complete **Language Approval Form** with School of Literature, Languages and Linguistics

- Complete ANU Global Programs online application by **30 Nov 2017 11.55pm** (AEST)
 - Application link: <https://anu-au-sa.terradotta.com>
- Late applications cannot be accepted
- Upload all documents by the deadline
- List up to five (5) partner universities in order of preference (1=first preference)
 - **You must be happy to go to ANY of the 5 partners you have listed.**
- You can load responses from previous exchange applications

How do I calculate my GPA?

- The GPA is reflected on your academic transcript
- ANU Global Programs uses the official ANU GPA calculation method to calculate your GPA after the Nov 2017 exams.
- You can find the GPA calculator we use on the ANU Global Programs system
- All courses you have taken count!
- Applicants are GPA ranked and the spots are allocated accordingly from the highest GPA down to the lowest



GLOBAL PROGRAMS

Welcome to the ANU Global Programs system

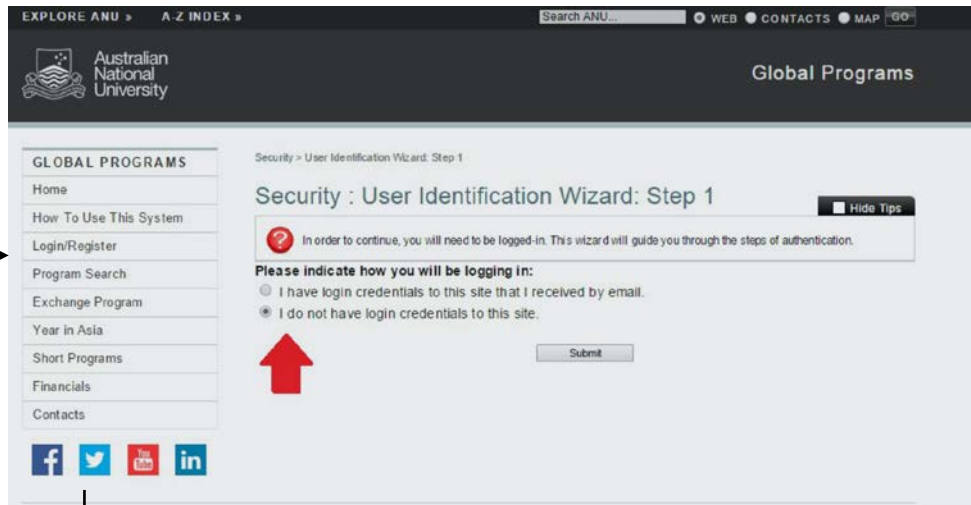
Make your studies an adventure

At ANU we offer students opportunities to study in Australia and Internationally. We're part of an international network of universities, and as Australia's national university we're able to open doors to amazing destinations.

You can view course brochures and content without logging in, but to apply for any of the programs available you will need to register an account through the Login/Register page.

Help and advice on using the system is available under How To Use This System.

Login/Register
- Login/register page

EXPLORE ANU » A-Z INDEX » Search ANU... WEB CONTACTS MAP GO

Australian National University

Global Programs

Security - User Identification Wizard: Step 1

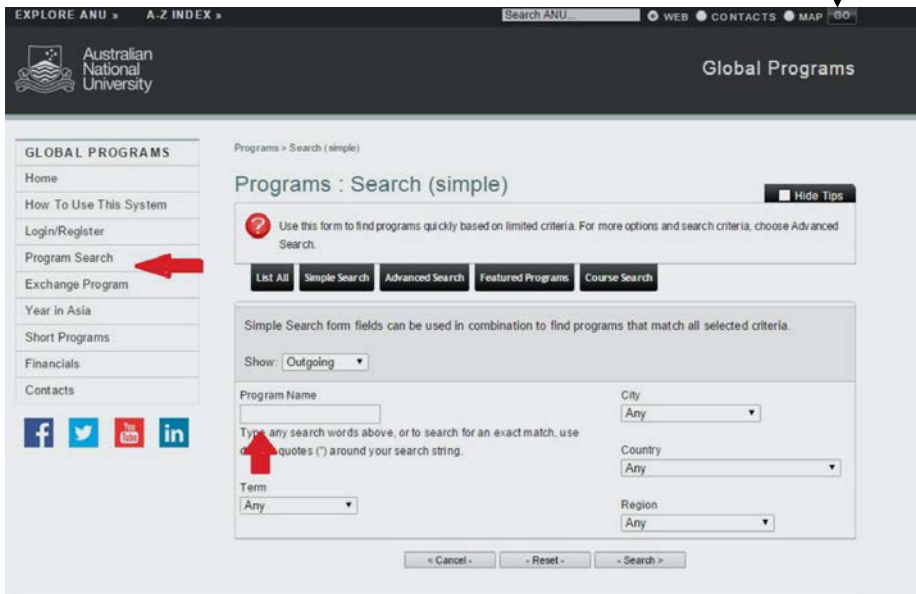
Security : User Identification Wizard: Step 1 Hide Tips

In order to continue, you will need to be logged-in. This wizard will guide you through the steps of authentication.

Please indicate how you will be logging in:

- I have login credentials to this site that I received by email.
- I do not have login credentials to this site.

Submit

EXPLORE ANU » A-Z INDEX » Search ANU... WEB CONTACTS MAP GO

Australian National University

Global Programs

Programs > Search (simple)

Programs : Search (simple) Hide Tips

Use this form to find programs quickly based on limited criteria. For more options and search criteria, choose Advanced Search.

List All Simple Search **Advanced Search** Featured Programs Course Search

Simple Search form fields can be used in combination to find programs that match all selected criteria.

Show: **Outgoing**

Program Name: City: **Any**

Type: any search words above, or to search for an exact match, use double quotes (") around your search string. Country: **Any**

Term: **Any** Region: **Any**

Search

Visit the
Global Program System
to start your application:

<http://anu-au-sa.terradotta.com>

What happens next?

Allocation of exchange partners

- Exchange spots are highly competitive. **Any exchange is a great exchange!**
- All exchange partners can offer a great opportunity, it is what you make of the opportunity!
- Each exchange partner offers a fixed number of spots for each semester.
- Some exchange partners only provide 1 spot, some can provide up to 10 spots.
- We can only place as many exchange students to each partner, as the partner agrees to accept from ANU. So exchanger spots available are fixed and final for the semester.
- Applicants are ranked by their GPA, starting from GPA 7s, working down to GPA 4s, when exchange spots are allocated.
- The higher the applicant's GPA (ie. 6.5+), the more likely the applicant would receive their higher listed partner ie. their 1st or 2nd choice.
- The lower the applicant's GPA (ie. <5.3), the harder it will be to get their top 3 choices, due to applicants with a stronger GPA awarded the last spot available. So applicants are more likely to receive their lower choices, 4th or 5th choice. It is still a great opportunity to get an allocation.
- Occasionally, some applicants with lower GPAs, might not receive any of the partners they have listed. If there are no spots left from the partners listed, we will contact the student and see what other spots that are unused and still available can work for the applicant.
- **Students should be prepared to accept any of the exchange partners they have listed on their application, as only *one* exchange partner will be allocated to them.**
- Students will log into the Global Program System in February 2018 and see the exchange partner they are allocated to, which will be displayed on their home page.

Accepting or declining the exchange

1. Students should be prepared to “accept” the nominated partner university allocated to them in Feb 2018, or if you “decline” your offer of the allocated partner, you are saying ‘no’ to exchange in this application round. No other offers are made. Allocation of the partner is FINAL
2. Attend compulsory nomination and pre-departure briefings
3. Must start and complete their application to host university
4. Get ANU academic college(s) to approve their host university course selections
5. Receive and accept offer from host university
6. Apply for visa
7. Attend pre-departure briefing (May 2018)
8. Complete your enrolment change form for your ANU academic college(s). They enrol you at ANU with the exchange semester for 2018 Semester 2, to received the credits from exchange when you successfully complete exchange
9. Get final course enrolment approval letter from your academic college(s)
10. Bon Voyage!

NB: This is assuming that everything goes according to plan. Applicants must be aware that issues or hurdles can arise from time-to-time and must be flexible and adaptable in their plans.



Your responsibilities

Before departure

- Always use your ANU email account to contact ANU
- Regularly check your ANU email account
- Confirm travel arrangements
- Attend any briefings
- **MUST** complete 'Enrolment Change Form' with Academic College(s)! Failure to do this could mean not being credited for your exchange courses, visa cancellations (international students) or Centrelink payment cancellations (domestic students)
- Meet all deadlines

While overseas

- Travel and living costs
- Ensure all financial obligations are met
- Visa regulations
- Full-time enrolment
- Being a good representative of ANU, Canberra and Australia

Upon return

- Assist in promotional activities on and off campus
- Share and provide feedback on your experiences

All Exchange Students! Connect with us!



Follow us on Instagram
[@anu_globalprograms](#)
[#anuglobalprograms](#)



Like us on Facebook
facebook.com/anuglobalprograms

A globe of the Earth is positioned on the right side of the image, showing continents in various colors (green, brown, red) and oceans in blue. To its left is a brown paper airplane, pointing towards the globe. The background is a blurred world map with various colors representing continents and oceans. The text "Thank you!" is written in a large, white, sans-serif font across the middle of the globe.

Thank you!

Visit the Global Program System to start your application:
<http://anu-au-sa.terradotta.com>