

Student Exchange Information Session

Exchange in Semester 1, 2019



Presented by: Kristina Tan, ANU Global Programs

15 March and 17 April 2018

Why go on exchange?

- Learn about another culture
- Become more independent and confident
- Opportunity to travel
- Meet new people
- Gain international experience
- Career development

Where can I go?

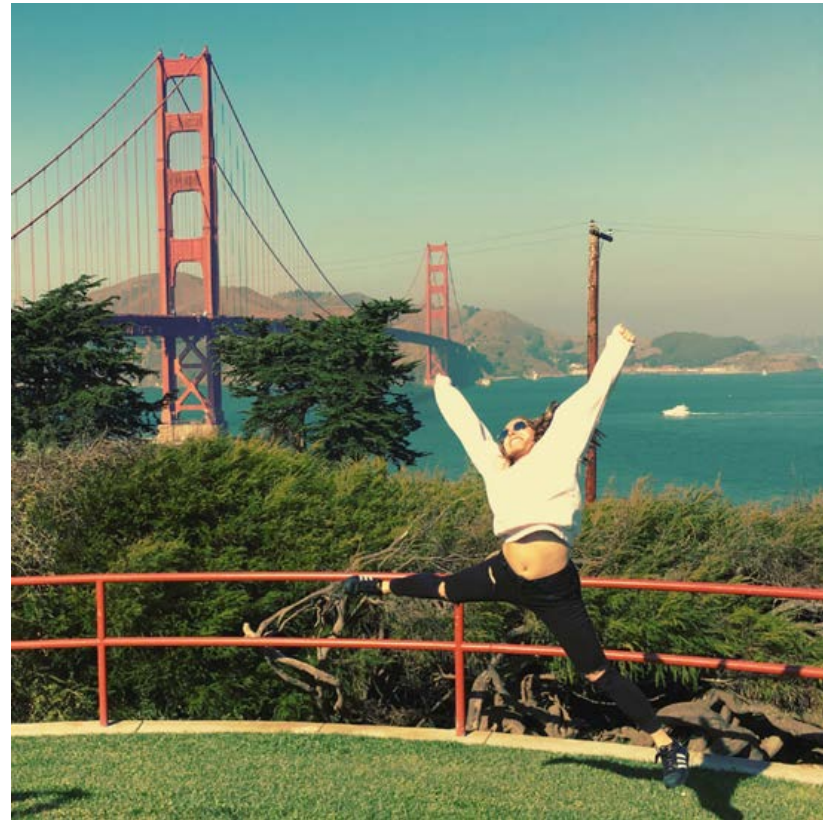


There are over 170+ partners in 39 countries!

Austria | Belgium | Brazil | Brunei | Canada | Chile |
China | Colombia | Czech Republic | Denmark | Finland |
France | French Polynesia | Germany | Hong Kong |
Hungary | India | Indonesia | Ireland | Italy | Japan |
Mexico | Myanmar | Netherlands | New Caledonia | New
Zealand | Norway | Peru | Portugal | Singapore | South
Korea | Spain | Sweden | Switzerland | Taiwan | Thailand
| Turkey | United Kingdom | United States

How does exchange work?

- Exchange is for one semester only.
- Year in Asia is for one year.
- Remain enrolled at ANU.
- Continue to accumulate your normal tuition fees at ANU.
- Your degree(s) has room for exchange studies.
- Must maintain a full-time study load (equivalent to 24 units).
- Courses studied overseas must be credit-bearing (you must seek approval from your academic college that courses chosen count towards your ANU degree).



Am I Eligible?

Requirements at time of going on exchange:

- Will have completed 48 units (1 year of full-time study) before exchange starts.
- Achieved minimum GPA of 4 on a 7 scale* (pass average) – it includes all courses taken in your undergraduate degree.
- Law students doing law subjects for exchange - Minimum GPA of 5 in all law courses.
- Obtain approval from academic college(s) with signed College Endorsement Form for your exchange semester.

* The GPA requirements can vary from partner to partner. For restricted partners (ie. very popular partners frequently chosen by students – exchange spots are limited), at the time of application and going on exchange, the applicant needs a minimum GPA of 6 to apply.

Requirements for Law students

- GPA of 5 and above in all your Law courses.
- Law students need to have completed at least 6 Law courses (36 units) at the time of application.
- All law student must consult the College of Law on eligibility, as there are implications to the research component to your law degree.
- Book an appointment to see the Law college.

How do I calculate my GPA?

- The GPA can be found on your academic transcript.
- You can also find the GPA calculator we use on the ANU Global Programs system.
- ANU Global Programs uses the official ANU GPA calculation method to calculate your GPA after you have taken your exams in May 2018. That is the official and final GPA used for allocating exchange spots available to applicants.
- All grades you have in your current degree count towards your GPA (WDs are excluded).
- Applicants are GPA ranked. Available exchange spots are allocated accordingly. Starting with the student with the highest GPA down to the lowest GPA.
- Only one exchange partner (one spot) is provided to each applicant.

You can go on exchange anytime,
starting in your second year onwards!



General suitability

What are we looking for?

A good candidate will demonstrate:

- Eligible GPA
- Will make exchange work with any partner
- Polite and respectful behaviour towards staff and other students
- Ability to follow application instructions
- Ability to follow rules and laws of another country
- Good organisational skills
- Flexibility
- Independence
- Adaptability
- Emotional resilience
- Determination
- Commitment
- A sense of “community spirit”

Applicant's considerations

- Would you like to live in a big city or a small town?
- Do you need to be in an English-speaking country?
- Does the university offer courses you would find interesting?
- Does the university offer courses available in the subjects you wish to study and offered in the correct term or semester for your chosen exchange period?
- What is the cost of living? Does it fit your budget?
- What is the weather and climate like?
- What are some of the cultural values of the country?
- What experience do you want from exchange?
- What activities and sports are popular?
- Is it important to be closer to Australia?

Academic considerations

Room (electives) within your degree

- Students need to have 24 ANU units available and approved for exchange.
- **A college endorsement form** must be signed by the academic college(s) advisers.
- Utilise elective courses wherever possible, because this allows for more flexibility!
- Double degree studies are not always possible at partners, so be flexible and ask both your ANU academic colleges how much room you actually have.
- Flexible Double Degree students must get both College signatures if they intend to study courses to count towards both degrees on exchange.
- Students may run into the following problems during exchange:
 - Restricted courses
 - Cancellation of courses
 - Timetable conflicts
 - Course content not what it seems

If you are doing electives and an unforeseen problem arises, it will be easier to manage any changes to courses with your academic colleges.

No enough electives within your degree

- ALL students need to obtain approval from their academic colleges, if they are applying for exchange.
- **A college endorsement form** must be signed by the academic college's advisers. Some students may be permitted to use non-electives (majors / minors) by their academic colleges but you **MUST** go and see them to discuss your options. It is the Colleges' decision as to whether you have any room in your degree for approved exchange studies.
- If you do not have enough electives remaining in your degree structure or are not absolutely certain that courses completed overseas will count towards your major(s) or minor(s), always check with your academic college what is possible.
- *Please seek advice from your College(s) whether you have approval and any room in your degree for exchange studies.*

Going on exchange – academic college course approvals

4 electives
(total 24 units)

Mostly electives
and Majors/ Minors
(total 24 units)

Fewer electives
and Majors/ Minors
(total 24 units)

No electives
Majors/ Minors
(total 24 units)



* Make sure you do your homework and look at course catalogues/course outlines from at least 5 universities to find suitable courses that complement your majors / minors. See you academic college for advice if unsure of what to look for.

CASS students - extra information

CASS students must follow specific instructions to on exchange, as listed on the CASS website:

<http://cass.anu.edu.au/cass-exchange-information>

If anything is not clear relating to the instructions provided on the CASS website, please ensure you visit the CASS student office in the Beryl Rawson Building.

What courses should I take on exchange?

- Students must investigate courses at partner universities that complement your course of study. It could be courses that are not offered by ANU.
- Students need to look at the courses/disciplines available for exchange (any restrictions), as well as whether it is offered during the correct semester.
- All students must look at course outlines you are interested in. Please check the partner's course catalogue for course details.
- It may be helpful to take course outlines with you, when you see your college for approval.

Only academic college advisers can provide approval:

- whether you have enough room (24 ANU units) in your degree for exchange studies.
- whether courses/subjects you wish to study can count as credit towards your ANU degree.

Studying in a foreign language

- Minimum language requirements
- Get a **Language Approval Form** and have it approved through the ANU School of Literature, Languages and Linguistics.

Please see the following language convenors for approval:

- French: Leslie Barnes Leslie.Barnes@anu.edu.au
- German: Katie Sutton Kate.sutton@anu.edu.au
- Italian: Susana Scarparo Susanna.scarparo@anu.edu.au
- Portuguese: Elizabeth Mayer Elisabeth.Mayer@anu.edu.au
- Spanish: Manuel Delicado Manuel.Delicado@anu.edu.au

Funding

- OS-HELP Loans
- Vice-Chancellor's Coursework Travel Grants
- Centrelink Youth Allowance

OS-HELP 2018

- OS-HELP amount is \$6,665 or \$7,998 for students studying in Asia.
- Submit your OS-HELP application online
- Only available to Australian Citizens, Permanent Humanitarian Visa holders or New Zealand Special Category Visa holders
- Commonwealth supported place in a degree program
- Have passed 48 units (approx. 8 courses)
- Minimum 6 units left at ANU to complete after exchange
- Note: students in their very last semester of degree studies may not be eligible, if you have no units left to complete.

<http://www.anu.edu.au/students/scholarships/os-help>

Vice-Chancellor's Coursework Travel Grants

Access and Equity (up to AUD \$10,000)

- You must be an Australian domestic student and are financially disadvantaged
- This may include students that also meet one or more of the following criteria:
 - Identify as Aboriginal or Torres Strait Islander
 - Have a long-term medical condition or disability
 - A holder of refugee status/Australian humanitarian visa
 - From a regional and remote background
- Applications for the Access and Equity grant open in March and close at the end of May.
- For any application questions, please refer to <http://www.anu.edu.au/students/contacts/access-inclusion>

Australian Government grants

- New Colombo Plan Scholarships* and Mobility Program (Indo-Pacific destinations)
- Endeavour Mobility Program

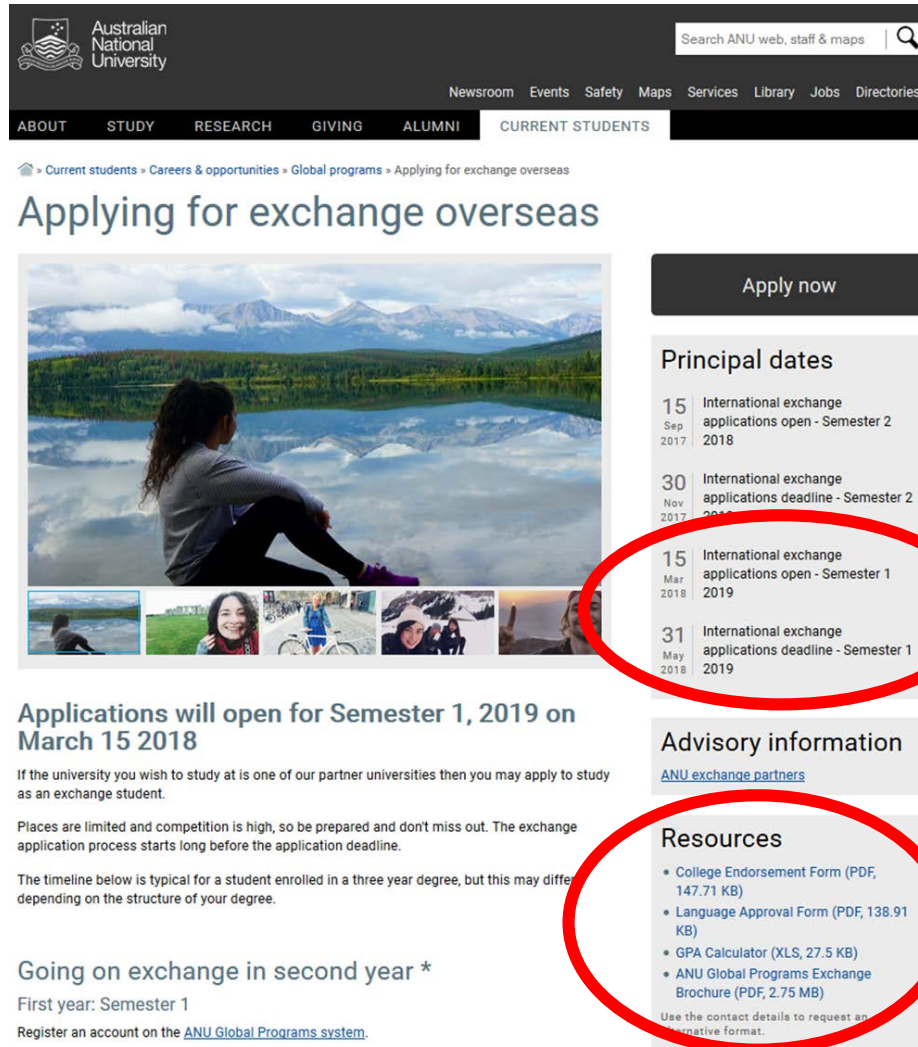
Exchange partners currently with funding are partners in South Korea, Japan, China, Hong Kong and Singapore.

You can visit the ANU Global Programs system and Government sites for information on grants and other funding. Your academic college(s) may also have college specific grants and other funding.

* NCP 2019 Scholarships specific information session planned for May 1st and May 7th 2018, held at Allan Barton Forum. Please see GP Facebook events page for details.

Application process

<http://www.anu.edu.au/students/careers-opportunities/global-programs/applying-for-exchange-overseas>



The screenshot shows the Australian National University website. The header includes the ANU logo, a search bar, and navigation links: Newsroom, Events, Safety, Maps, Services, Library, Jobs, Directories. Below the header is a breadcrumb trail: [Home](#) > [Current students](#) > [Careers & opportunities](#) > [Global programs](#) > [Applying for exchange overseas](#). The main heading is "Applying for exchange overseas". Below this is a large image of a person sitting by a lake with mountains in the background. To the right of the image is a "Principal dates" section with a table of dates. Below the image is a section titled "Applications will open for Semester 1, 2019 on March 15 2018" with text explaining the application process. To the right of this section is an "Advisory information" section with a link to "ANU exchange partners". Below the advisory information is a "Resources" section with a list of links to various forms and calculators. The "Principal dates" and "Resources" sections are circled in red.

Principal dates

15 Sep 2017	International exchange applications open - Semester 2 2018
30 Nov 2017	International exchange applications deadline - Semester 2 2018
15 Mar 2018	International exchange applications open - Semester 1 2019
31 May 2018	International exchange applications deadline - Semester 1 2019

Applications will open for Semester 1, 2019 on March 15 2018

If the university you wish to study at is one of our partner universities then you may apply to study as an exchange student.

Places are limited and competition is high, so be prepared and don't miss out. The exchange application process starts long before the application deadline.

The timeline below is typical for a student enrolled in a three year degree, but this may differ depending on the structure of your degree.

Going on exchange in second year *

First year: Semester 1

Register an account on the [ANU Global Programs system](#).

Resources

- [College Endorsement Form \(PDF, 147.71 KB\)](#)
- [Language Approval Form \(PDF, 138.91 KB\)](#)
- [GPA Calculator \(XLS, 27.5 KB\)](#)
- [ANU Global Programs Exchange Brochure \(PDF, 2.75 MB\)](#)

Use the contact details to request an alternative format.



Print and complete – Colleges must sign

College Endorsement Form ANU Global Programs Student Exchange Program Page 1 of 2



INSTRUCTIONS – EXCHANGE APPLICANTS MUST READ:

Before you can finalise your application to undertake an exchange you must:

1. Fill out questions 1 to 15 of this form, using the flexible fields or hand-written.
2. Research and list 5 universities that you would like to go on exchange to. Please be aware that while we endeavour to give you your first preference, you may be allocated any of the preference you have listed. Places are allocated based on GPA ranking of all the students and availability of exchange spots with exchange partners.
3. Add the equivalent units of a full semester (not at the exchange partner. This information can be found in the [Global Program System](#) for each exchange partner.
4. You must list your GPA and ensure you have noted any additional minimum requirements that may be set by each partner you have listed.
5. Book a meeting with your academic College(s). **You must have the form approved by your academic College(s).** Please also sign this form yourself on page 2.
6. If you are in a Flexible Double Degree and intend on doing subjects relevant to both your degrees, you must get it approved by both your academic colleges.
7. Apply for exchange online via the [Global Program System](#).
8. Once your college(s) have signed the College Endorsement form, scan and save a PDF copy (NOT a camera phone image) of this form and upload to the [Global Program System](#).
9. If you are planning to study at a language partner (studying any of your exchange courses in French, German, Italian, Portuguese or Spanish), you MUST complete the [Language Approval Form](#) and have it signed by the relevant language convener. Once completed, scan and save a PDF copy (NOT a camera phone image) of the completed "Language Approval Form" and upload to the [Global Program System](#).

STUDENTS TO COMPLETE

1. Semester and Year of Intended Exchange:		Year: 2018 Semester: Two	
2. Last Name:		4. Student ID:	
3. First Name:		6. Your Major/s: (if any)	
5. Your Degree Program/s: (if any)		8. Your Specialisation/s: (if any)	
7. Your Minor/s: (if any)		10. Your cumulative GPA: (You can work this out here)	
9. Broad subject areas you are considering doing on exchange:			
11. Exchange partner choice #1	12. Exchange partner choice #2	13. Exchange partner choice #3	14. Exchange partner choice #4
15a. 24 ANU units = at this partner	15b. 24 ANU units = at this partner	15c. 24 ANU units = at this partner	15d. 24 ANU units = at this partner

College Endorsement Form ANU Global Programs Student Exchange Program Page 2 of 2



COLLEGE(S) TO COMPLETE. THIS FORM MUST BE SIGNED BY COLLEGE ADVISOR(S) AND STUDENT.

COLLEGE 1	COLLEGE 2 (IF APPLICABLE)
Student approved to undertake _____ units in _____ degree towards _____ (single major / minor / specialisation / electives / other)	Student approved to undertake _____ units in _____ degree towards _____ (single major / minor / specialisation / electives / other)
Student approved to undertake _____ units in _____ degree towards _____ (single major / minor / specialisation / electives / other)	Student approved to undertake _____ units in _____ degree towards _____ (single major / minor / specialisation / electives / other)
Student approved to undertake _____ units in _____ degree towards _____ (single major / minor / specialisation / electives / other)	Student approved to undertake _____ units in _____ degree towards _____ (single major / minor / specialisation / electives / other)
Student approved to undertake _____ units in _____ degree towards _____ (single major / minor / specialisation / electives / other)	Student approved to undertake _____ units in _____ degree towards _____ (single major / minor / specialisation / electives / other)
Please state total available units towards exchange: _____ units <small>Note: Students must have 24 units approved by academic college(s) for one semester of exchange studies.</small>	Please state total available units towards exchange: _____ units <small>Note: Students must have 24 units approved by academic college(s) for one semester of exchange studies.</small>
COLLEGE SPECIFIC REQUIREMENTS: (if required, please add any conditions)	COLLEGE SPECIFIC REQUIREMENTS: (if required, please add any conditions)
College Name:	College Name:
College Advisor Name:	College Advisor Name:
College Advisor Signature:	College Advisor Signature:
Date:	Date:
Student Signature:	Student Signature:
Date:	Date:



ANU Global Programs

+61 2 6125 7857
outbound.global@anu.edu.au

121 Marcus Clarke Street, Building X-005,
Canberra ACT 2601
www.anu.edu.au

ANU Global Programs Student Exchange Program Language Approval Form

*** Once completed, please scan and save a PDF copy (NOT a camera phone image) of the completed "Language Approval Form" and upload this form to the [Global Program System](#). ***

This form MUST be submitted if you plan to study at an institution where:

- the primary language of instruction is not English, and
- you intend studying any or all your courses in the institution's primary language of French, German, Italian, Portuguese or Spanish, and
- you are studying one of these languages at the ANU School of Literature, Languages and Linguistics.

This form must be signed off by the relevant ANU Language Program Convener.

Once completed and signed, this form should be scanned as a PDF or JPG file and uploaded to your student exchange program application in the ANU Global Programs system.

Most European partner universities require exchange students to have a proficiency level of CEFR B2 or higher in the relevant language.

Student Name: _____ Student Number: _____

Language Program: _____, School of Literature, Languages and Linguistics

I certify that the above student has consulted me about participating in the ANU Student Exchange Program and that the student's language ability (tick one)

- ☐ is not sufficient to study at university level.
- ☐ is sufficient to study at university level by the time he/she will depart. The student has been advised that gaining the sufficient language proficiency is a condition of this approval.

Additional information:

Staff Name: _____ Phone extension: 612 5 _____

Email: _____@anu.edu.au

Signature: _____ Date: ____/____/____

ANU School of Literature, Languages and Linguistics Language Program Convener details:

French: Leslie.Barnes@anu.edu.au Portuguese: Elisabeth.Mayer@anu.edu.au
German: Gabriele.Schmidt@anu.edu.au Spanish: Manuel.Delgado@anu.edu.au
Italian: Daniel.Martin@anu.edu.au

Updated 12/9/2017

Looking at a partner brochure page

Most partners offer studies in English. Always check the partners' own website for what language their courses are taught in.

GPA requirement to be considered by ANU for this partner.

Exchange year available to student ie. third year and above

Programs : Brochure Hide Tips

This page is the brochure for your selected program. You can view the provided information for this program on this page and click on the available buttons for additional options.

[List All](#) [Simple Search](#) [Advanced Search](#) [Featured Programs](#) [Course Search](#) [Map Search](#)

Exchange Program - ETH Zürich, Switzerland

Zurich, Switzerland (Exchange Program) (Outgoing Program)

Program Terms: Semester 1, Semester 2 This program is currently not accepting applications. [Print](#)


Language: English	Program type: Exchange
Minimum GPA req.: 6	Faculties/Colleges: General
Year level availability: Third year (after 96 units)	Program category: Restricted

Program Description:

About ETH Zentrum Zurich

Founded in 1855, ETH Zurich today has more than 18,000 students from over 110 countries, including 3,900 doctoral students. To researchers, it offers an inspiring working environment, to students, a comprehensive education.

Twenty-one Nobel Laureates have studied, taught or conducted research at ETH Zurich, underlining the excellent reputation of the university.



Courses and areas of study

Please find the online course catalogue here.

Credit Equivalencies

Standard is 30 ECTS = 24 ANU units. For CECS and Colleges of Science students 24 ECTS = 24 ANU units.

Exchanges can be uni-wide or some are college specific. So not all partners offer the courses you require and exchange may not be offered at some schools. Please look at what is available, as well as any restrictions the partner has listed on their websites.

Look at the partner's own course catalogue for what courses are offered.

Each partner has its own credit equivalency for what is a full semester load equivalent to ANU 24 units.

Additional partner considerations

- **Year-level restrictions of partner** - Some partners only offer courses to exchange students that are taught at a later year. This means students need be in their second year 2nd semester or third year of studies during exchange.
- **Home nationality** - Some partners may not accept international students (from their home country) for exchange eg. some partners in Korea and China. Please refer to partners' websites and their restrictions.
- **Limited spots per partner** - Students need to be flexible. Students may receive any of their preferences listed, the partner allocated to you may not necessarily be your first choice.
- **Exchange is competitive** - Students with a higher GPA are more likely to receive one of their top preferences listed in their application.
- **Applications for 'Restricted' partners** – GPA 6 required and students will need to provide a 'statement of purpose'.
- **College specific** - Students must meet any additional requirements of their ANU academic college(s).

Restricted partners – GPA 6

Every partners only offers a fixed number of exchange spots each semester.

We have @176 exchange partners with some listed as restricted partners.

Restricted partners mean they are in high demand. They are frequency listed by many applicants in their preferences. Students listing very popular partners should be aware that the few spots available, can only go to the students with the highest GPA first until all the spots are used. So you should have a minimum GPA 6 to be considered for one of the available spots.

- Canada – McGill University
- Canada - University of British Columbia and University of Toronto (for both partners - exchange only available in Sem 2, not Sem 1)
- China - Peking University
- Denmark - University of Copenhagen
- France - Sciences Po
- Hong Kong - University of Hong Kong
- Ireland - Trinity College Dublin
- Japan - The University of Tokyo
- Singapore - National University of Singapore and the NUS Business School
- Sweden - Lund University
- Switzerland - ETH Zürich
- UK - King's College London (no spots for 2018/19), University of Nottingham
- USA partners in general

Starting your application



You should list up to five (5) partner universities you hope to go to.

- Look at information on the partner program page in the ANU Global Programs system.
- Research exchange partner's own university website pages too. Look at what courses are available, as well as any restrictions on year/level offered, disciplines/colleges/schools.
- Print and fill out **College Endorsement Form** and take it to your academic college(s) advisors for their approval and signature.
- If applicable, complete **Language Approval Form** and take it to the relevant language convenor at the School of Literature, Languages and Linguistics.

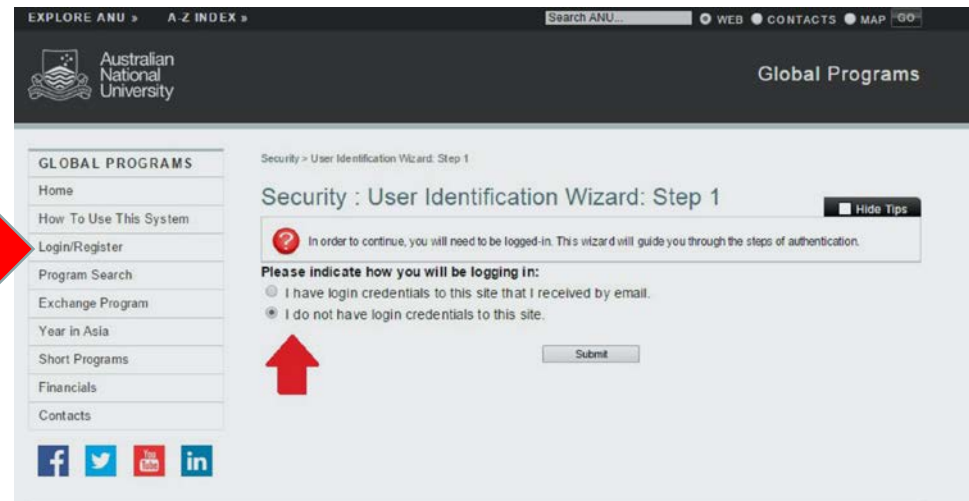
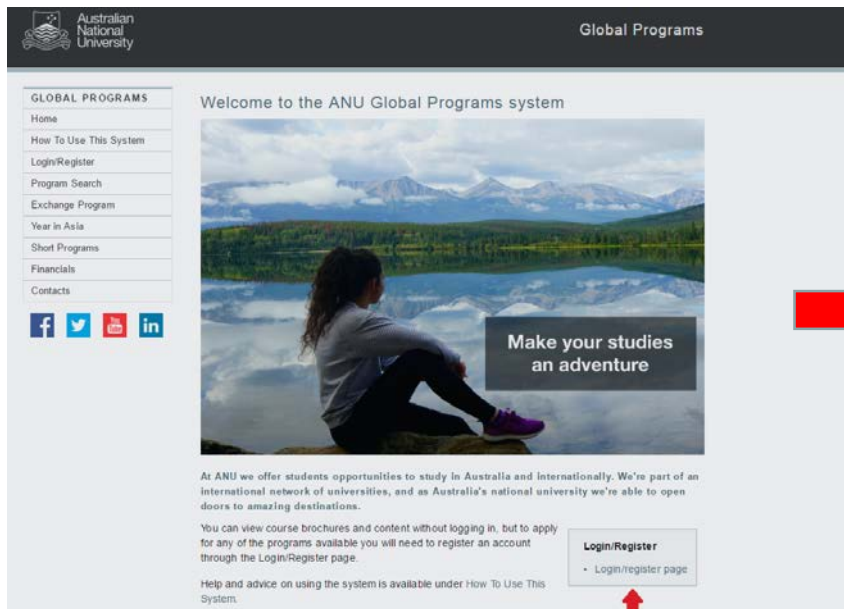
Apply via Global Programs System

- Create account.
- Upload **College Endorsement Form**.
 - Flexible Double Degree students should get both College signatures if they intend to study courses to count towards both degrees on exchange
- If applicable, upload **Language Approval Form**.

<https://anu-au-sa.terradotta.com>

Starting your application

- Log into the Global Program System to start your application:
 - <http://anu-au-sa.terradotta.com>





Logout | Applicant Home | Admin Home

Programs > Brochure

Programs : Brochure

Hide Tips

This page is the brochure for your selected program. You can view the provided information for this program on this page and click on the available buttons for additional options.

List All Simple Search Advanced Search Featured Programs Course Search

Exchange Program - National University of Singapore - Business School

Singapore, Singapore (Exchange Program) (Outgoing Program)

Program Terms:	Semester 1, Semester 2	Apply Now	Print
Homepage:	Click to visit		
Program Dates & Deadlines:	Click here to view		

Fact Sheet:

Language:	English	Program type:	Exchange
Minimum GPA req.:	6	Faculties/Colleges:	Business and Economics
Year level availability:	Second year, second semester (after 72 units)	Program category:	Restricted

Program Description:

National University of Singapore

Program Description

NUS Business School has consistently received top rankings in the Asia-Pacific region by independent publications and agencies, such as The Financial Times, Economist Intelligence Unit, and QS Top MBA, in recognition of the quality of its programmes, faculty research and graduates. With values of Excellence, Innovation, Integrity, Teamwork and Care, they strive to advance knowledge and develop leaders so as to serve business and society. NUS Business School has achieved a 50-year tradition in delivering a learning experience that is rigorous, relevant and rewarding. Our role is to challenge and inspire students, and ultimately enabling them to achieve their potential for both personal and professional growth. Today, we continue to attract a great diversity of students who have drive, confidence, a strong record of achievement and a burning desire to advance the progress of business and society.

When you know the 5 universities you want to list, start your application process by using the Program Search engine and clicking Apply Now.

Programs | Process | Site | Staff | Settings

Applicant : Available Program Terms

To create your application, Select the term and year to which you are applying. When you are ready to create the application, click on the 'Apply' button at the bottom of the page.

Available Terms

Terms	Semester 1, 2019
-------	------------------

Apply Cancel

Programs | Process | Site | Staff | Settings

Program Application Page (Pre-Decision)

Submit Application

Ella Barnett

Program:	Exchange Program - National University of Singapore - Business School
Term/Year:	Semester 2, 2018
Deadline:	30/11/2017
Dates:	TBA

Application Instructions

Before continuing with your application, please ensure you have read through the Exchange program application requirements and information. This information is available on the ANU Global Programs Student Exchange Program page - https://anu-au-sa.terradotta.com/index.cfm?FuseAction=Abroad.View.Link&Parent_ID=0&Link_ID=E9B62A07-02C7-572F-0F3498A7ADD2C4EC.

Please remember that this is just ONE of the FIVE separate exchange applications you must complete. The order of your preferences must be identical within each application and identical to the rankings on your Applicant Home Screen.

Please ensure that the next step you take is to complete a 'College Endorsement Form' and organise an appointment with a College Advisor to have it approved.

Every task on this page must have a tick against it before your application can be assessed. Once you have completed each step (and each task has a tick) your application will be reviewed by staff.

You will not hear anything further until a pre-determined decision date, at which time the system will notify you of a decision.

Questionnaire(s)

Click the following to view and complete the following online questionnaire(s). You may begin a questionnaire and save it for later completion, but note that you must click Submit in order for the questionnaire to be logged as complete and ready for review.

Title	Completed
Personal Details	<input type="checkbox"/>
Step 1: Upload Approved College Endorsement Form	<input type="checkbox"/>
Step 2: Exchange Application	<input type="checkbox"/>

Signature Documents

Click the following to view and digitally sign important documents to indicate your agreement and understanding.

Title	Completed
Home Country and Citizenship Criteria	<input type="checkbox"/>
Privacy Notice (ANU Exchange and Year in Asia Program)	<input type="checkbox"/>
Terms and Conditions (ANU Exchange and Year in Asia Programs)	<input type="checkbox"/>

Learning Content

Click the following to view, read, and mark these learning content pages as having been read.

Title	Completed
Blank College Endorsement Form (Resource)	<input type="checkbox"/>
Exchange Information Session	<input type="checkbox"/>

Step 2: Exchange Application:

(*) Indicates the question is required.

1. Year of study (*)

In what year of study will you be when you intend to go on exchange?

For example, if you are currently in your first semester of first year at ANU and are applying to go on exchange in the first semester of next year, you will be in 'Second Year'.

Second year, second semester (after 72 units) ▼

2. What area of study do you intend to undertake on exchange? (*)

Society and culture

3. What is the name of the exchange partner of your first preference? (*)

This selection must be identical (and in the identical preference-based order) as your five other program applications. If you change your mind about your preferences before the application closing date, please edit this response to ensure that it is consistent with your other applications and your program rankings in your Applicant Home Screen.

National University of Singapore ▼

4. What is the name of the exchange partner of your second preference? (*)

This selection must be identical (and in the identical preference-based order) as your five other program applications. If you change your mind about your preferences before the application closing date, please edit this response to ensure that it is consistent with your other applications and your program rankings in your Applicant Home Screen.

Sungkyunkwan University ▼

5. What is the name of the exchange partner of your third preference? (*)

This selection must be identical (and in the identical preference-based order) as your five other program applications. If you change your mind about your preferences before the application closing date, please edit this response to ensure that it is consistent with your other applications and your program rankings in your Applicant Home Screen.

Osaka University ▼

6. What is the name of the exchange partner of your fourth preference? (*)

This selection must be identical (and in the identical preference-based order) as your five other program applications. If you change your mind about your preferences before the application closing date, please edit this response to ensure that it is consistent with your other applications and your program rankings in your Applicant Home Screen.

Seoul National University ▼

7. What is the name of the exchange partner of your fifth preference? (*)

This selection must be identical (and in the identical preference-based order) as your five other program applications. If you change your mind about your preferences before the application closing date, please edit this response to ensure that it is consistent with your other applications and your program rankings in your Applicant Home Screen.

Chinese University of Hong Kong ▼

In each of your five applications, you complete “one application for each partner”, you will need to list the 5 partners you are applying to, in each of the applications. You list them in order of preference in the exact same order into Q4, Q5, Q6, Q7 and Q8, for each of the applications. Please see “Step 2 – Exchange Application” for each of your five applications.

TIP: Write down the five universities you're applying to, in order of preference, before starting your online applications! This will be the order you stick to for the questions above.

Listing partners in order of preference

- When applying for exchange, students need to list up to 5 partners. This means **5 separate** applications.
- Please complete the exchange applications in order of preference.
 - Eg. NUS = 1st preference, should be your 1st application
CUHK = 5th preference, should be your 5th application
- Know your preference order before you start.
- If the order is not consistent in your applications, your application will be viewed as it is.
- Your preference ranking is final once you submit it and it cannot be changed.
- Please check all 5 applications have the same order.

Each application should have ticks showing on the right hand-side in all the boxes. ■

36



Semester 1, 2019

1	Exchange Program - National University of Singapore, Singapore (n/a) (ID 37895 ranked 1)	Deadline: 31/5/2018 Withdraw
2	Exchange Program - Sungkyunkwan University, South Korea (n/a) (ID 37894 ranked 2)	Deadline: 31/5/2018 Withdraw
3	Exchange Program - Osaka University, Japan (n/a) (ID 37896 ranked 3)	Deadline: 31/5/2018 Withdraw
4	Exchange Program - Seoul National University, South Korea (n/a) (ID 37897 ranked 4)	Deadline: 31/5/2018 Withdraw
5	Exchange Program - Chinese University of Hong Kong, Hong Kong (n/a) (ID 37898 ranked 5)	Deadline: 31/5/2018 Withdraw

Once you have completed the five university applications, you need to rank them in preference order (which should be the same order as the last slide and hopefully the order you applied in).

This can be done before or after you have submitted your applications.

Application Tips

- Research your universities, that's the first step!
- Get your College Endorsement Form signed is the second step!
- Language Approval Form signed too (if required)
- Online application is the third step!
- **Only start your application after you have done your homework.**
- Know what universities you want and in what order, BEFORE you start the application!
- Have your College Endorsement forms ready to upload.
- Make sure you have the option that saves your responses. They will be the same (almost) every time.
- Write down the universities you're applying to in order of preference – please stick to the order when applying.

Application – more tips

Responses for "Step 2a: Statement of Purpose"

1. Statement of Purpose

In 400 words, tell us an idea of an innovative way you would promote ANU and Canberra at this host university. How would you convince prospective exchange students there to come back to ANU to study?

- With restricted partners, you can copy and paste your Statement of Purpose – you do not have to think of 5 ‘innovative idea(s) of how to promote Canberra’
- Your date of birth is ddmmyyyy – input numbers only, no special characters.

Apply before the deadline

- Complete ANU Global Programs online application by **31 May 2018 11.55pm** (AEST)

Application link: <https://anu-au-sa.terradotta.com>

- Late applications cannot be accepted
- Upload all documents by the deadline
- List five (5) partner universities in order of preference (1=first preference)

You must be happy to go to ANY of the 5 partners you have listed.

GPA's and exchange spots

- Some applicants, with lower GPAs (usually the lower 4 or where students list all the popular partners), might not receive any of the 5 partners listed. With no spots left from any of their partners listed, we will contact the applicant and discuss the available remaining spots with other partners. We will work with the applicant, based on their study discipline, to see whether it is still possible to go on exchange.
- Applicants with mid to lower GPAs (ie. 5.3 and below), many of the exchange spots have been allocated. Many popular partners may no longer be available, as applicants with stronger GPAs have been awarded all the spots for that partner. Applicants should be realistic and be prepared to receive a spot within any of their 5 partners listed. This may even be your 4th or 5th choice. It is always a great opportunity to get an exchange allocation, within the list you have provided.
- Applicants with higher GPAs (usually 6.5+), the more likely the applicant would receive their higher listed partner ie. in most cases, it may be their 1st or 2nd choice, dependant on spots available with the partner and the student's study discipline.
- Be flexible in the partner selections. There are over 170+ partners to choose from!



What happens next?

Exchange next steps guide



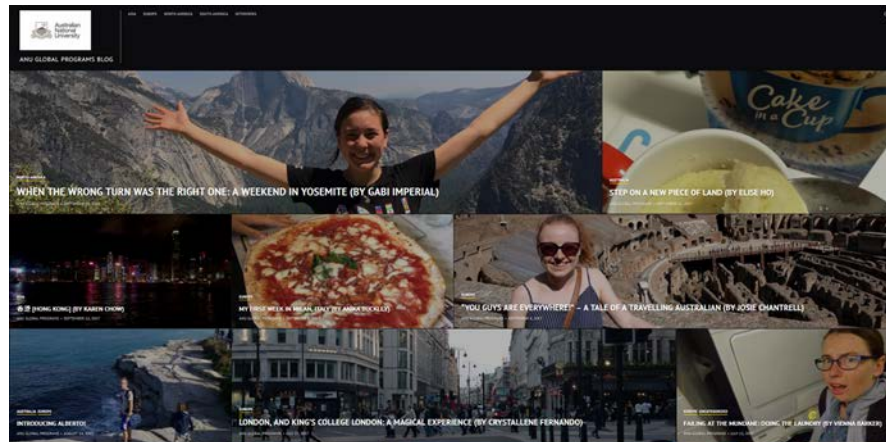
STARTING YOUR EXCHANGE APPLICATION:

- Application is for exchange in 2019 Semester One.
- You are an undergraduate student.
- Met minimum GPA for the partner.
- Done your research on your list of exchange partners.
- Checked (course outlines) courses/disciplines are offered at all of them, research at least 5 exchange partners.
- You have room available (24 ANU units) within degree(s) for exchange.
- Obtained ANU academic college(s) approval for:
 - 4 electives or equivalent available
 - **College Endorsement Form SIGNED** by academic college advisers – everyone must do this
 - **Language Approval Form SIGNED** by language convenor - only applicable for studies in foreign language
- Online application lodged on Global Program System, before deadline 31 May 2018.

WAIT FOR PARTNER EXCHANGE ALLOCATION:

- Please ensure you check your ANU email account in June and July for really important information.
- Log into the Global Program System in July 2018 for your allocated exchange partner.
- Partner allocations are final. Students will get only one nominated partner.
- Students allocated partners with an early application deadline will be contacted earlier. So check your emails.
- Prepare to accept your allocated exchange partner.
- **Attend compulsory briefing session in July/August for next steps! Email invites will be sent out in June/July.**
- Students will need to start their exchange application directly to the partner university.
- Each partner has it own unique deadline, that may be in July, right up to November.
- Global Programs will continue to work with you, to make your exchange studies overseas possible. ☺

All Exchange Students! Connect with us!



Follow us on Instagram
@anu_globalprograms
#anuglobalprograms

<https://anuglobalprograms.wordpress.com>

Like us on
Facebook
[facebook.com
/anuglobalpro
grams](https://facebook.com/anuglobalprograms)

A brown paper airplane is shown in flight, pointing towards a small globe of the Earth. The globe is positioned on the right side of the frame. The background is a blurred world map with various colors representing continents and oceans. The text "Thank you!" is overlaid on the globe in a large, white, sans-serif font.

Thank you!

Visit the Global Program System to start your application:
<http://anu-au-sa.terradotta.com>



Questions and Answers